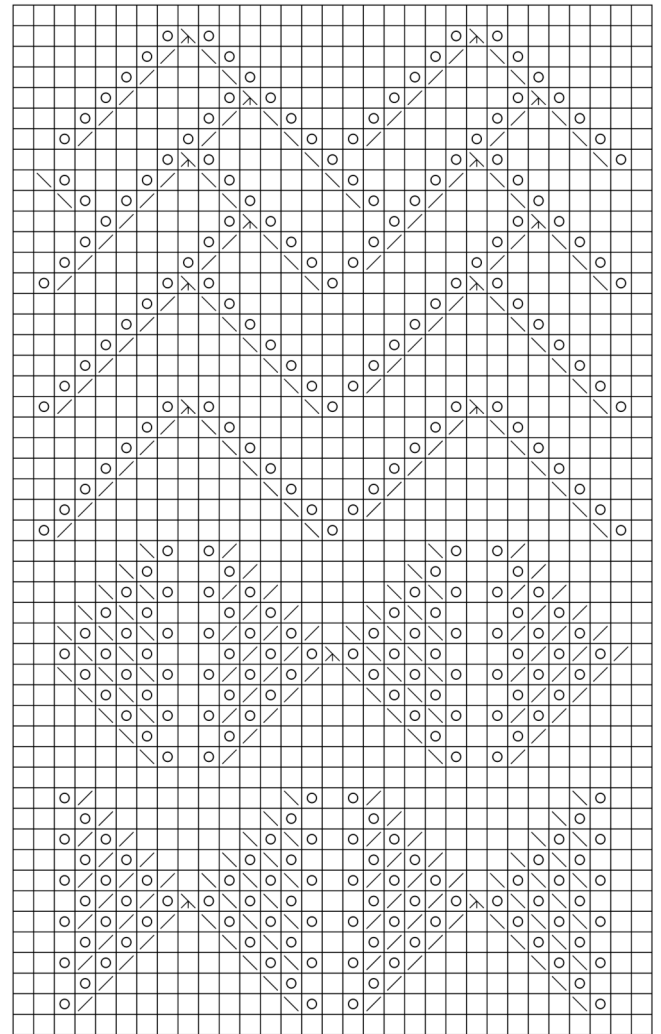
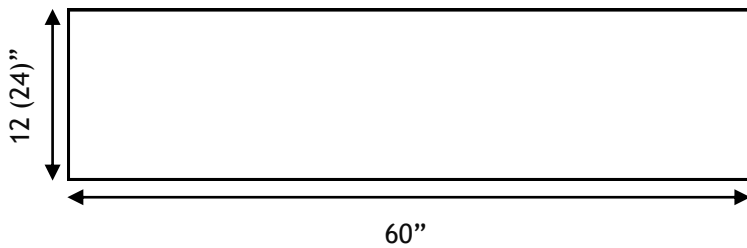


RED RIVER WRAP



THE DESIGN

The trees of Pineville, the Red River, the bricks of Alexandria; this was the inspiration for the Red River Wrap. Worked from end to end, this rectangular stole or scarf features three lace patterns that transition seamlessly from one to the next. Little lace trees for the pines of Pineville, chevron waves for the churning waters of the Red River, and herringbone bricks for the brick buildings and roads of Alexandria.

PATTERN

The pattern will contain complete written instructions as well as charts, and will be tech edited and test knit before publication.

YARN

Manos del Uruguay Fino, 2 skeins Birdcage

GAUGE

16.5 sts and 24.5 rows= 4 inches in lace pattern

NEEDLES

Size 6/4mm or size needed to obtain gauge